



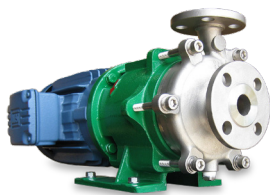
MAXP Series ANSI (Magnetic Drive)

Max. Flow: 2000 gpm
 Max. Head: 470 feet
 Temperature: -150°F to 800°F
 Max. Power: 200 hp
 Materials of Construction: Carbon Steel, 304SS, 316SS, Alloy 20, Alloy B&C, Monel, Titanium
 Bearings: SiC, SiC-X



3575 Series ANSI (Mechanical Seal)

Max. Flow: 5000 gpm
 Max. Head: 720 feet
 Temperature: up to 700°F
 Max. Power: 300 hp
 Materials of Construction: Ductile Iron, Steel, 316SS, CD4M-Cu, Alloy 20, Alloy B&C, Ni-Hard, Titanium



MP/MPL/MPH Series Sub-ANSI / ANSI (Magnetic Drive)

Max. Flow: 340 gpm
 Max. Head: 400 feet
 Temperature: -100° to 536°F
 Max. Power: 20 hp
 Materials of Construction: 316SS, Alloy 20, Alloy B&C
 Bearings: SiC, SiC-X



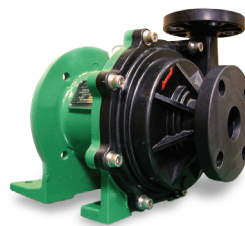
MPT Series (Magnetic Drive)

Max. Flow: 40 gpm
 Max. Head: 440 feet
 Temperature: -40° to 445°F
 Max. Power: 20 hp
 Materials of Construction: 316SS
 Bearings: SiC-X



MMP Series (Magnetic Drive)

Max. Flow: 20 gpm
 Max. Head: 95 feet
 Temperature: -100° to 536° F
 Max. Power: 3/4 hp
 Materials of Construction: 316SS
 Bearings: SiC-X
 Shaft: 316SS, SiC



MMP Series (Magnetic Drive)

Max. Flow: 106 gpm
 Max. Head: 103 feet
 Max Temperature: 175° F
 Max. Power: 3 hp
 Materials of Construction: GF Polypropylene
 Bearings: C-PTFE, Carbon
 Shaft: Ceramic



MTA Series ANSI (Magnetic Drive)

Max. Flow: 1000 gpm
 Max. Head: 285 feet
 Temperature: 5° to 275° F
 Max. Power: 50 hp
 Materials of Construction: PFA Lined
 Bearings: C-PTFE, SiC
 Shaft: SiC



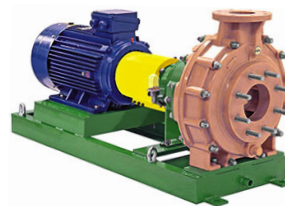
ME Series (Magnetic Drive)

Max. Flow: 90 gpm
 Max. Head: 140 feet
 Temperature: 32° to 195° F
 Max. Power: 3 hp
 Materials of Construction: ETFE Lined, PVDF Lined
 Bearings: C-PTFE, SiC;
 Shaft: Ceramic, SiC



Side Channel Pumps

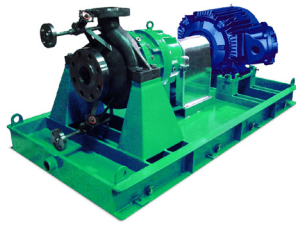
Max Flow: 155 gpm
 Max Head: 1180 feet
 Max Temp: 482° F
 Max Power: 150 hp
 Max Pressure: 750 psi
 Max Viscosity: 200 centistokes
 Materials of Construction: 316 stainless steel, Duplex stainless steel, Hastelloy® C 276, Incoloy® 825.
 Others available upon request.



FRP Pumps

Max Flow: 1800 gpm
 Max Head: 450 feet
 Max Temp: 250° F
 FRP Construction
 Different formulations of epoxy vinyl ester resins available upon request.

Custom engineered pumps are available for conditions that exceed the operating parameters outlined above.



API MAG DRIVE PUMPS

Max Flow: 17600 gpm
 Max Head: 1000 feet
 Max Temp: 842°F
 Max Power: 1300 hp
 Max Pressure: 14700 psi
 Max Viscosity: 200 centistokes

Materials of Construction: 316 stainless steel, Duplex stainless steel, Hastelloy[®] C 276, Incoloy[®] 825, or Titanium.
 Others available upon request.



VANE MAG MAGNETIC DRIVE SLIDING VANE PUMPS

Max Flow: 13 gpm
 Max Head: 472 feet
 Max Temp: 392°F
 Max Power: 3 hp
 Max Pressure: 730 psi
 Max Viscosity: 10000 centistokes

Materials of Construction: 316 stainless steel, Duplex stainless steel, Hastelloy[®] C 276, Incoloy[®] 825.
 Others available upon request.



HOLLOW DISC PUMPS

Max Flow: 200 gpm
 Max Head: 267
 Max Temp: 392°F
 Max Power: 50 hp
 Max Pressure: 232 psi

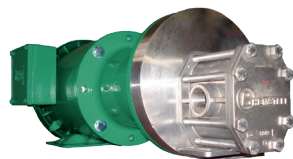
Max Viscosity: 10000 centistokes
Materials of Construction: 316 stainless steel, Duplex stainless steel, Hastelloy[®] C 276, Incoloy[®] 825.
 Others available upon request.



S Series-Gear Pumps (Mechanical Seal)

Max. Flow: 30 gpm
 Max. Head: 150 psi
 Max Temperature: 450° F
 Max. Power: 5 hp
Casing Materials:
 316SS, Hastelloy[®] equiv., Ryton[®]
Shaft: 316SS, Hastelloy[®] equiv.

Bearing Materials:
 Carbon, Teflon[®], Rulon[®]



SM Series-Gear Pumps (Magnetic Drive)

Max. Flow: 30 gpm
 Max. Head: 110 psi
 Max Temperature: 450° F
 Max. Power: 5 hp
Casing Materials:
 316SS, Hastelloy[®] equiv., Ryton[®]
Shaft: 316SS, Hastelloy[®] equiv.

Bearing Materials:
 Carbon, Teflon[®], Rulon[®]

Custom engineered pumps are available for conditions that exceed the operating parameters outlined above.